

Rapid Detection with Confidence!



SIMPLE & FAST

Our new Mycoplasma Pro Detection Kit (Cat. No. G239) has a fast and simplified workflow, detects a market leading breadth of species, and has an internal PCR control built in to give you additional confidence in your results.

Competitor products not only entail a lengthier assembly process but also demand extended PCR run times, contributing to a less time-efficient workflow. Additionally, their results pose a challenge in terms of interpretation, introducing complexity to the analysis phase.

Market Leading Performance

	abm	Competitor A	Competitor S
Sample Type and Amount	Cell Supernatant, 2.5ul	Cell Suspension, 1 ml	Cell Supernatant, 100 ul
Number of Reactions per Kit	100	40	24
Sample Preparation Time	~10 min	~1 hour	~20 min
PCR Run Time	1 hour 10 min	1 hour 37 mins	2 hour 11 mins
Total Time to Results	1 hour 20 min	2 hour 37 mins	2 hour 31 mins
Internal PCR control	Yes	No	Yes
Number of Species	300 +	60 +	Not specified
Reported Sensitivity	10 CFU/ml	2 fg at 32 cycles	≤20 mycoplasma genomes per 2 mL of sample
Ease of Result Readout	Straightforward	Challenging due to overlap of positive control and mycoplasma positive result in a sample	Challenging because internal PCR control decreases in brightness with increasing contamination level
Additional Materials Required	-	Heat block, Centrifuge	Taq DNA Polymerase Heat Block, Centrifuge

Streamlined and Simple Workflow



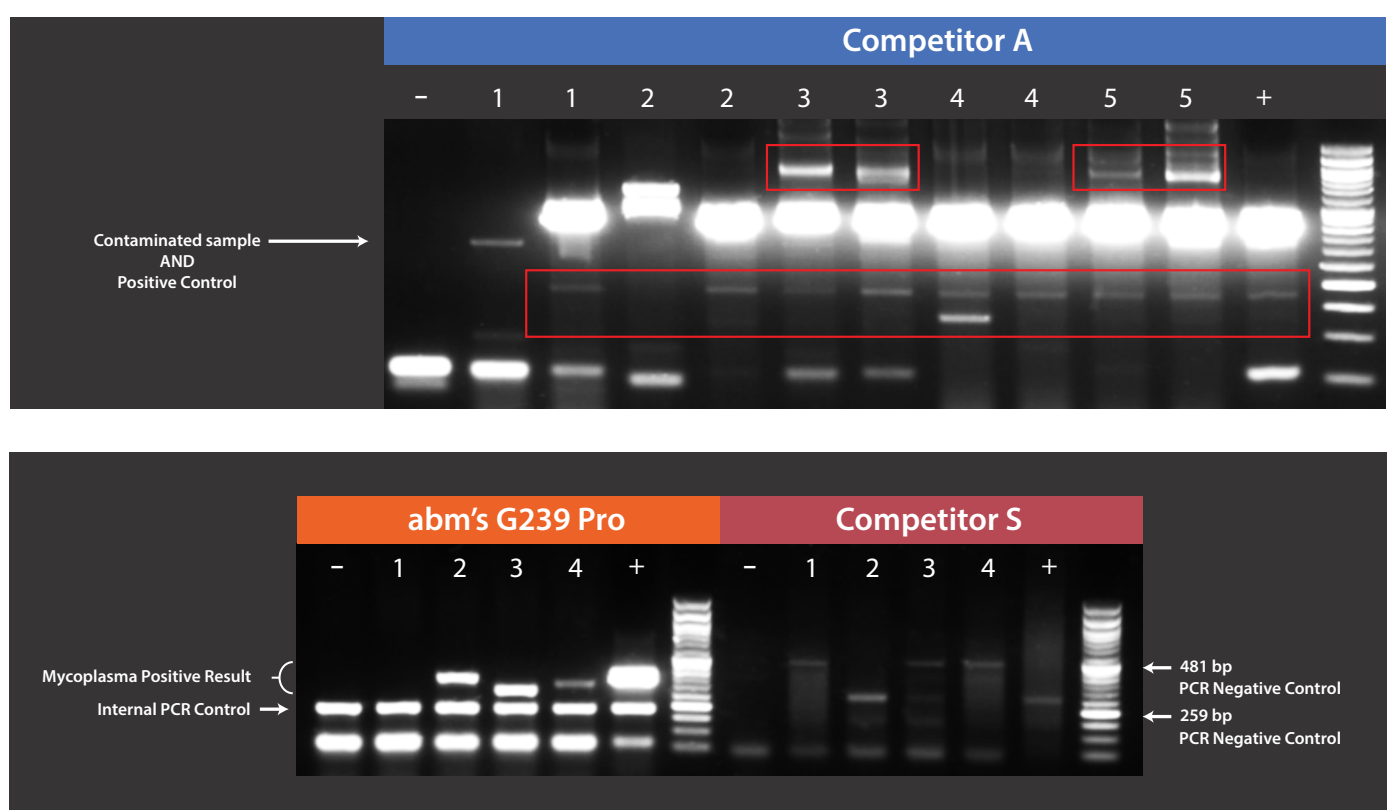
Trustworthy Screening Result

The inclusion of an internal PCR control is imperative for discerning true negative results from reactions affected by factors such as media additives, amplification conditions, or human error. Our **Mycoplasma Pro Detection Kit (Cat. No. G239)** addresses this necessity by incorporating an internal PCR control (180 bp band) that effectively showcases the functionality of the reaction. Notably, this internal PCR control is easily distinguishable from the Mycoplasma-positive PCR result, which falls within the range of 300-600 bp.

In contrast, Competitor A, whom we evaluated against our product, lacks an internal PCR control in their offering. Instead, they propose a separate PCR reaction for each sample with the addition of a positive control, specifically, "test sample + positive control." However, this approach comes with two significant drawbacks. Firstly, it necessitates doubling the number of required assays – reaction 1 for the "test sample" and reaction 2 for the "test sample + positive control," leading to increased consumption of the provided positive control. Secondly, a notable concern arises due to the observed overlap of bands: their positive control is 464 bp, while the positive PCR result falls within the range of 434-468 bp. This overlapping scenario introduces challenges in the interpretation of results.

Definitive Result Read Out

Fast decision-making in cell culture management demands reliable results. The Mycoplasma Detection Kit from Competitor A introduces several challenges, including issues like excessive non-specific annealing and overlapping bands. Competitor S faces similar problems, with inconsistent intensity in the negative control as contamination levels rise. In contrast, **abm's Mycoplasma Pro Detection Kit (Cat. No. G239)** excels in sensitivity and specificity, providing users with unparalleled confidence in their results. The kit not only eliminates the drawbacks found in competing products but also ensures consistent and dependable outcomes.



Superior Performance at Best Value

abm's sample preparation is not only fast but also highly efficient. Researchers can expedite the process by simply mixing the kit components according to the desired number of assays and then adding the supernatant from the suspected cells. In preparation, competitors' products often involve cell lysis and/or denaturation, increasing both sample preparation time and the risk of contamination through the handling of potentially compromised cells.

Furthermore, our **Mycoplasma Pro Detection Kit (Cat. No. G239)** offers exceptional value, providing sufficient material for 100 reactions. The product comes complete with **Blastaq™ 2X PCR MasterMix (Cat. No. G895)**, eliminating the need for additional reagents or equipment. In comparison, competitors impose limits of 24 and 40 assays, partly due to additional kit components such as lysis tubes and lyophilized mixtures. Competitor S also requires customers to separately purchase a Taq DNA Polymerase or use own polymerase. This not only results in higher pricing per reaction but also leaves less room for troubleshooting challenging samples. Our comprehensive solution not only streamlines the process but also ensures cost-effectiveness and reliability in Mycoplasma detection.

Order Information

Product Name	Cat. No.	Size
Mycoplasma PCR Detection		
Mycoplasma PCR Detection Kit	G238	100rxn
Mycoplasma Pro PCR Detection Kit	G239	100rxn
Mycoplasma Elimination		
MycoAway™ Mycoplasma Elimination Cocktail (1000X)	G398	1.0 ml
Bundles		
Mycoplasma PCR Detection & Elimination Bundle	G238-G398	Bundle
Mycoplasma Pro PCR Detection & Elimination Bundle	G239-G398	Bundle